

# NON-SERIOUS WORKPLACE INJURY OR ILLNESS

## Emergencies

In the event of an emergency<sup>1</sup> (i.e., a spill, incident involving hazardous materials, injury, illness, etc.) call **DPS at (213) 740-4321** (or if not at UPC or HSC, call **911**).

## Faculty, Staff, or Volunteers

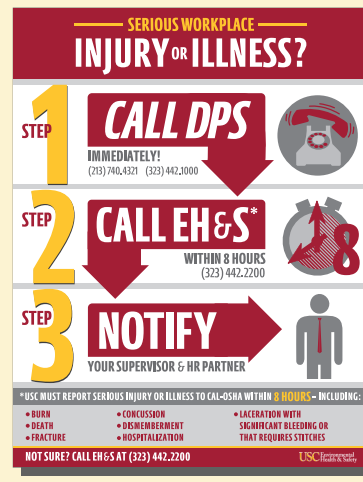
who become injured/ill while performing work for USC:

1. Notify your supervisor, Principal Investigator (PI), or instructor within 24 hours.
2. **Call Broadspire at (800) 495-2315. A nurse will triage** and help you locate an occupational medical facility for treatment. A Workers' Compensation Claim Form (DWC1)<sup>2</sup> should be completed and provided to the medical facility on your first appointment.
3. Make sure your supervisor completes a Manager's Report of Incident Form<sup>3</sup>

## USC Students

who become injured/ill:

1. **Contact USC Student Health at (213) 740-9355** to speak to an appointment representative  
NOTE: After business hours, students will be connected with an on-call physician or nurse.



### Resources

<sup>1</sup>1-2-3 Serious Injury Flyer:  
<http://tiny.cc/usc-123>

<sup>2</sup>Workers' Compensation Claim Form:  
<http://tiny.cc/DWC1>

<sup>3</sup>Manager's Report of Incident Form:  
<http://tiny.cc/usc-mgr-report-incident>

Injury and Illness Prevention Plan:  
<http://tiny.cc/usc-iipp>

USC Student Health:  
<http://tiny.cc/usc-med-services>

**Questions?** Contact [ehs@usc.edu](mailto:ehs@usc.edu) or (323) 442-2200.



**USC** University of  
Southern California

**OFFICE OF ENVIRONMENTAL HEALTH & SAFETY**

**HTTP://EHS.USC.EDU**  
SEPT 2019