

HEALTH AND SAFETY: “Safer at Home” (COVID-19 Instructions)

By order of the Los Angeles County Department of Public Health, April 10, 2020

For the health and safety of our essential employees and patrons, please observe the following:

- Keep **6 feet distance** from other individuals
- **Wear a face covering** in these premises
- Use the **hand sanitizing stations**

Cover your mouth and nose with a cloth face cover when around others _____



- **You could spread COVID-19 to others** even if you do not feel sick.
- **Everyone should wear a cloth face cover when they have to go out in public**, for example to the grocery store or to pick up other necessities.
 - » Cloth face coverings should not be placed on young children under age 2, anyone who has trouble breathing, or is unconscious, incapacitated or otherwise unable to remove the mask without assistance.
- **The cloth face cover is meant to protect other people** in case you are infected.
- Do **NOT** use a facemask meant for a healthcare worker.
- Continue to **keep about 6 feet between yourself and others**. The cloth face cover is not a substitute for social distancing.

DO NOT ENTER: If you have a fever, cough, or difficulty breathing



Feeling Sick?

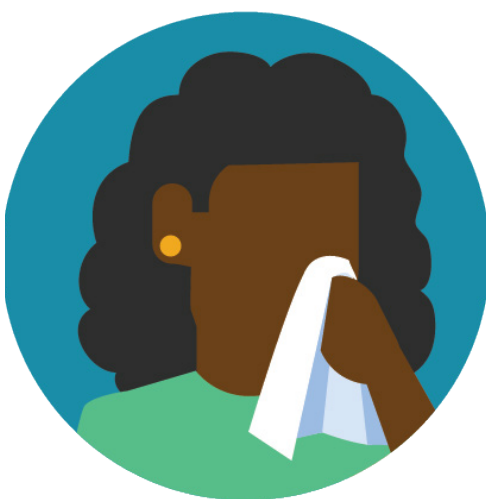
Stay home when you are sick!

If you feel unwell or have the following symptoms
please leave the building and contact your health care provider.
Then follow-up with your supervisor.

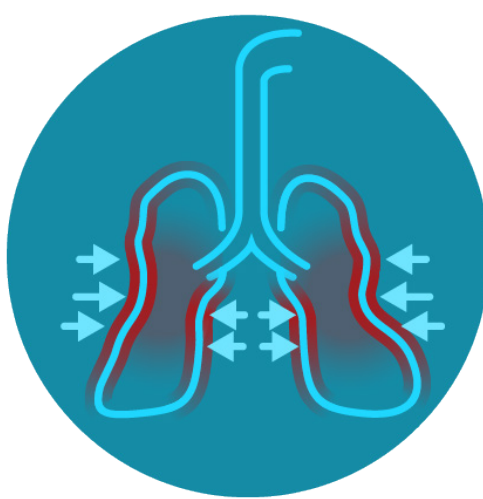
DO NOT ENTER if you have:



FEVER



COUGH



**SHORTNESS
OF BREATH**